

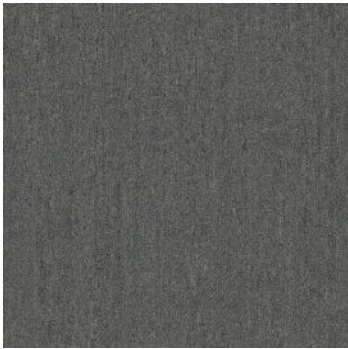
Transit Modular (7029)

Product Quick Specs

Style Name/Number	Transit Modular 7029
Color Name/Number	Node 1942
Construction	Level Loop
Selected Backing	Nexus® Modular
Dye Method	Solution Dyed
Fiber Type	Encore® SD Ultima® (with recycled content)
Face Weight	14 oz./sy (475 grams/m2)
Pile Density	5330 oz./y3 (197.64 kg/m3)
Pattern Repeat	N/A
Gauge	5/64 (5.04 rows/cm)
Stitches	9.8 stitches/in (3.86 stitches/cm)
Standard Size	24" x 24" approx. 60.96cm x 60.96cm
Standard Adhesive	Commercialon Premium Modular Adhesive
Optional Adhesive	TileTabs
Smoke Density	Less than 450 flaming
Static Test	Less than 3 kv
Standard Warranties	Encore SD Ultima Fiber Nexus Modular Commercialon Adhesive for Modular Carpet & LVT
Optional Warranties	Tile Tabs



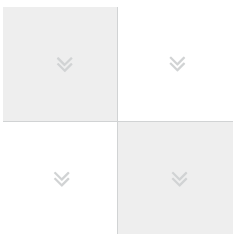
Products Installed



Transit Modular 7029 Modular
1942 Node

carpet

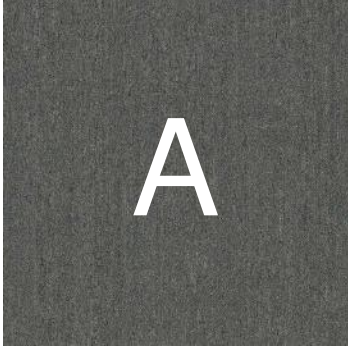
Installation Method



Monolithic (24x24)

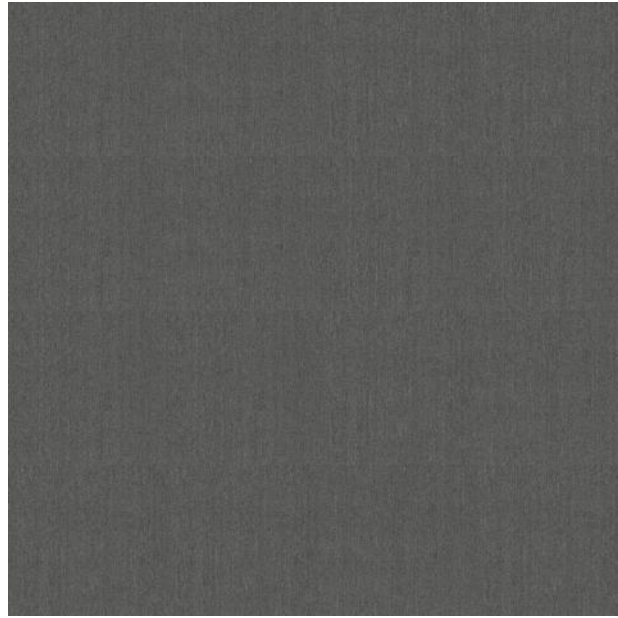
This three dimensional rendering is for visualization purposes only and may not be an exact representations of the selected products. Pile heights may vary from product to product and adhesive requirements may vary depending on product selection. The review of actual product samples are recommended before final selection. Please contact your J+J Flooring Group sales representative with any questions. This unique carpet design is protected under the U.S. Copyright Act of 1976. Any unauthorized copying or duplication of this design constitutes copyright infringement in violation of federal law.

Keys



Transit Modular 7029 Modular
1942 Node

Carpet



Pattern Diagram

A	A	A	A
⋈	⋈	⋈	⋈
A	A	A	A
⋈	⋈	⋈	⋈
A	A	A	A
⋈	⋈	⋈	⋈
A	A	A	A
⋈	⋈	⋈	⋈