

INVISION  
QUICK SHIP  
BROADLOOM

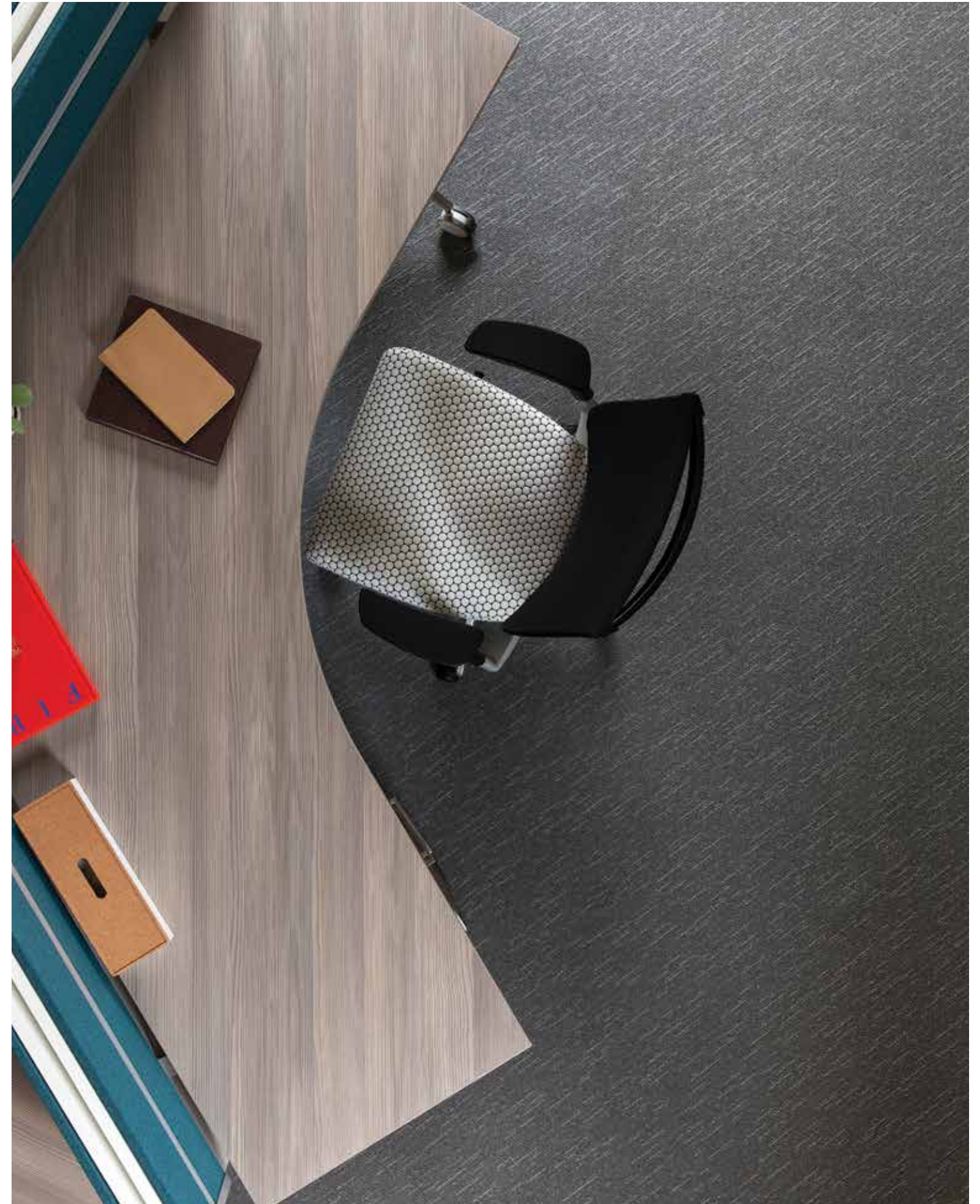


## Quick Ship Broadloom

Sometimes schedules drive everything. For those times J+J Flooring Group offers the Invision Broadloom Quick Ship program. This program ensures that some of our most popular Invision styles and colors will ship within 10 days for orders up to 1,500 square yards (13,500 sq.ft.) You can be sure that your flooring solution fits your precise design, budget and performance needs. You need it quickly – we're on it.

 FLOORING GROUP

[cover] *Structure Pilaster.*  
[right] *Tone Minuet.*

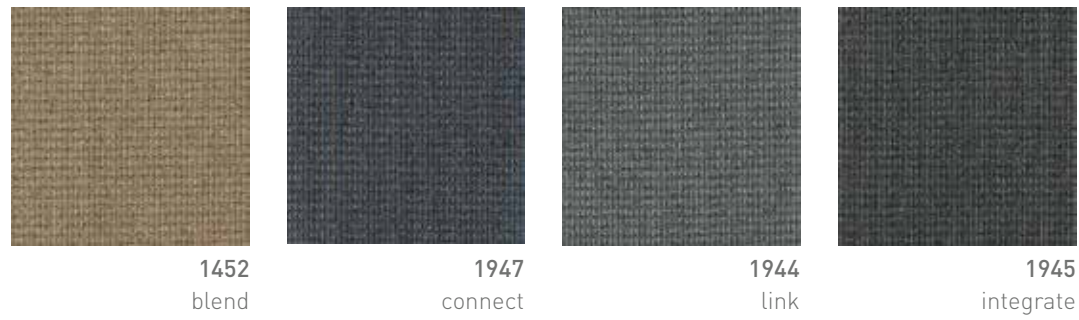




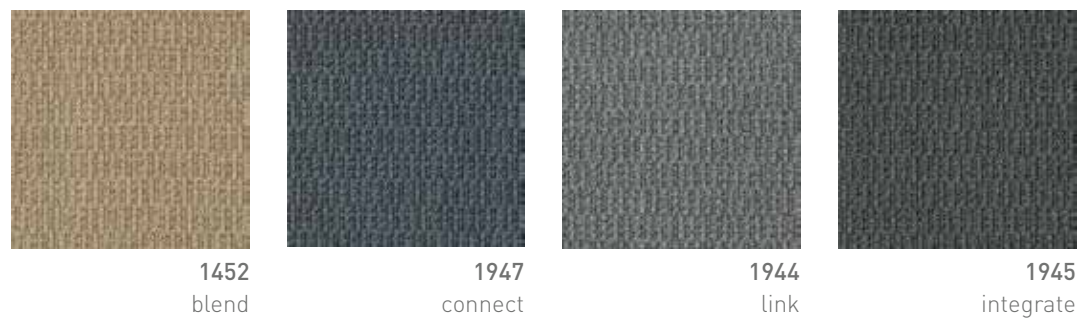
**SPECIFICATION**

<b>style</b>	mix II 3512	merge II 3522	fuse II 3532
<b>construction</b>	patterned loop	patterned loop	patterned loop
<b>fiber type</b>	100% Encore® BCF nylon with ColorLoc® Plus	100% Encore® SD Ultima nylon	100% Encore® SD Ultima nylon
<b>dye method</b>	solution / yarn dyed	solution dyed	solution dyed
<b>backing</b>	PremierBac® Plus	PremierBac® Plus	PremierBac® Plus
<b>ounce weight (nominal average)</b>	19.0 oz/ square yard	19.0 oz/ square yard	19.0 oz/ square yard
<b>total thickness (nominal average)</b>	0.28 inches (0.71 cm)	0.28 inches (0.71 cm)	0.28 inches (0.71 cm)
<b>dimensions</b>	12 feet (3.66 m)	12 feet (3.66 m)	12 feet (3.66 m)
<b>pattern repeat</b>	½" W x ¾" L Approx (1.27 cm x 1.90 cm)	⅞" W x 3.75" L Approx (2.22 cm x 9.53 cm)	¾" W x 2" L Approx (1.90 cm x 5.08 cm)

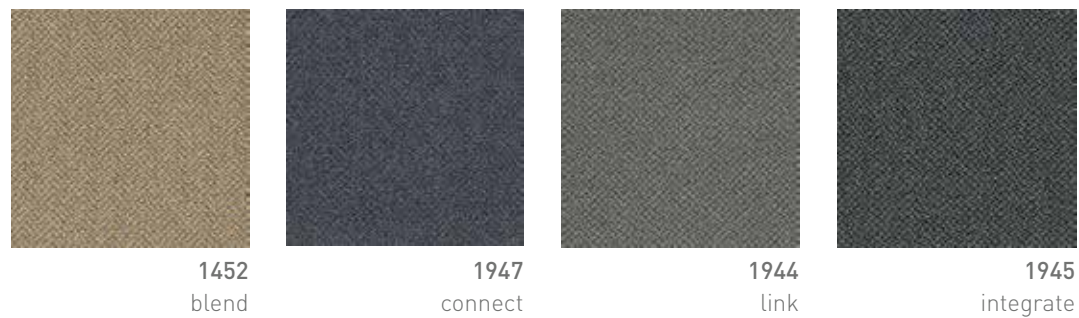
**MIX II**



**MERGE II**



**FUSE II**



(above) Mix II *Blend*.  
 (top left) Merge II *Link*.  
 (bottom left) Fuse II *Integrate*.





(above) Impulse III *Speak Your Mind*.  
 (top right) Structure *Pilaster*.  
 (bottom right) Tone *Pitch*.



## SPECIFICATION

style	impulse III 2433	structure 2010	tone 2024
construction	patterned loop	textured loop	textured loop
fiber type	100% Encore® BCF nylon with ColorLoc® Plus	100% Encore® SD Ultima nylon	1100% Encore® SD Ultima nylon
dye method	solution dyed	solution dyed	solution dyed
backing	PremierBac® Plus	PremierBac® Plus	PremierBac® Plus
ounce weight (nominal average)	20.0 oz/ square yard	20.0 oz/ square yard	16.0 oz/ square yard
total thickness (nominal average)	0.25 inches (0.635 cm)	0.218 inches (0.55 cm)	0.22 inches (0.56 cm)
dimensions	12 feet (3.66 m)	12 feet (3.66 m)	12 feet (3.66 m)
pattern repeat	n/a	¼" W x ¼" L (0.63 cm x 0.63 cm)	36" W x 21.625" L Approx (91.44 cm x 54.92 cm)

### IMPULSE III



1432  
give it a whirl



1811  
tell a tale



1808  
make a move



7412  
speak your mind

### STRUCTURE



1800  
camber



1806  
spandrel



1801  
pilaster



1804  
truss

### TONE



1752  
pitch



1756  
prelude



1757  
minuet



1758  
finale



## product details

### FIBER

#### Encore® BCF Nylon with ColorLoc® Plus

Encore BCF nylon with ColorLoc Plus is manufactured to offer exceptional color, performance and appearance retention. Carpet using Encore BCF nylon with ColorLoc Plus - our patented stain resistant technology - is engineered to resist permanent staining and is backed by Lifetime Performance Warranties for stain resistance, colorfastness, color transfer, water bleed, bleach resistance and wear.

#### Encore® SD Ultima® (with recycled content)

Encore SD Ultima is specifically engineered to maximize appearance retention with exceptional color, performance, sustainability and practicality.

### BACKINGS

#### PremierBac® Plus

J+J Flooring Group PremierBac® Plus is standard on Invision's broadloom products and provides superior construction to ensure solid dimensional stability for broadloom carpets.

- Stretch-in or glue-down installation
- Manufactured in an ISO 14001 certified facility
- Contains pre-consumer recycled content and contributes to LEED
- Recyclable through the J+J Flooring Group's R4 Carpet Reclamation Program

#### OPTIONAL:

TitanBac

Endure Plus

### ADHESIVES

#### Commercialon® Premium Carpet Adhesive

A premium carpet floor adhesive approved for all carpets and backing systems (except vinyl backed carpets). This adhesive is guaranteed for the life of the installation when used in accordance with the J+J Flooring Group Carpet Installation Handbook. Commercialon Premium Adhesive meets the CRI Low-VOC Emission Criteria, CRI ID# PSA-425402. Commercialon Premium Adhesive is non toxic, has ultra-low odor and is antimicrobial in the dry state.

### TECHNOLOGIES

#### ProTex® Soil Release

ProTex is a proprietary fluorochemical technology that is applied and bonded to the pile fiber to impede soiling and to improve cleanability. It is standard on all J+J Flooring Group products.

ProTex works similarly to the technology used in nonstick cookware by lowering the surface energy of the fibers which increases soil release properties. Very small soil particles cause carpet to appear dull. Thanks to ProTex, small soil particles are effectively removed by vacuuming or wet cleaning.

#### OPTIONAL:

ProSept® Antimicrobial

Sentir® Advanced Odor-Blocking Technology



#### Green Circle - Zero Waste to Landfill Operations Certification

We are proudly certified as a Zero Waste to Landfill manufacturer by GreenCircle Certified, LLC., a prominent third-party certifier of environmental claims. We are the first commercial flooring manufacturer in the United States to achieve this landfill free status and the first company in the industry to have its waste diversion efforts audited and verified by a recognized, third-party certifier.

To learn more about zero waste or our other initiatives see our sustainability progress report online at [jjflooringgroup.com/sustainability](http://jjflooringgroup.com/sustainability)



We're on it.

The J+J Flooring Group Premium Customer Experience.

Our Premium Customer Experience is a carefully crafted process by which we guarantee that our customers will get the products, services and the reliability they expect from us.

To learn more visit: [jjflooringgroup.com/customer-experience/](http://jjflooringgroup.com/customer-experience/)

## corporate programs

## combined colorway

mix II 3512



1452  
blend

merge II 3522



1452  
blend

fuse II 3532



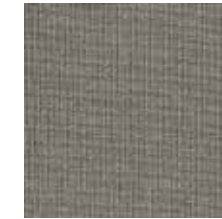
1452  
blend

impulse III 2433



1432  
give it a whirl

structure 2010



1800  
camber

tone 2024



1752  
pitch



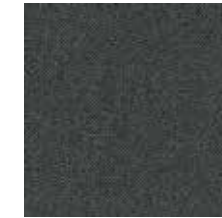
1947  
connect



1947  
connect



1947  
connect



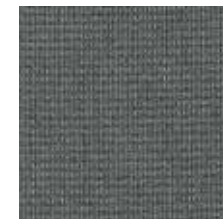
1811  
tell a tale



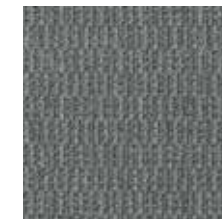
1806  
spandrel



1756  
prelude



1944  
link



1944  
link



1944  
link



1808  
make a move



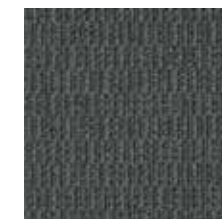
1801  
pilaster



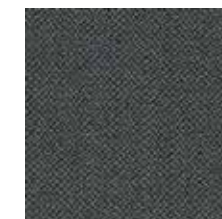
1757  
minuet



1945  
integrate



1945  
integrate



1945  
integrate



7412  
speak your mind



1804  
truss



1758  
finale

<b>style</b>	mix II 3512 broadloom	merge II 3522 broadloom	fuse II 3532 broadloom
<b>construction</b>	patterned loop	patterned loop	patterned loop
<b>fiber type</b>	100% Encore® BCF nylon with ColorLoc® Plus	100% Encore® SD Ultima nylon	100% Encore® SD Ultima nylon
<b>dye method</b>	solution / yarn dyed	solution dyed	solution dyed
<b>ounce weight</b>	19 oz/sy (644 grams/m <sup>2</sup> )	19 oz/sy (644 grams/m <sup>2</sup> )	19 oz/sy (644 grams/m <sup>2</sup> )
<b>gauge</b>	1/10 (3.94 rows/cm)	1/10 (3.94 rows/cm)	1/10 (3.94 rows/cm)
<b>backing</b>	PremierBac® Plus	PremierBac® Plus	PremierBac® Plus
<b>size</b>	12 feet	12 feet	12 feet
<b>pattern repeat</b>	½" W x ¾" L Approximate (1.27 cm W x 1.90 cm L)	⅞" W x 3.75" L Approximate (2.22 cm W x 9.53 cm L)	¾" W x 2" L Approximate (1.90 cm W x 5.08 cm L)
<b>total thickness (nominal average)</b>	.28 inches (0.71 cm)	.28 inches (0.71 cm)	.28 inches (0.71 cm)
<b>special technology</b>	ProTex® fluorochemical	ProTex® fluorochemical	ProTex® fluorochemical
<b>optional special technologies</b>	ProSept® antimicrobial Sentir® advanced odor blocking treatment	ProSept® antimicrobial Sentir® advanced odor blocking treatment	ProSept® antimicrobial Sentir® advanced odor blocking treatment
<b>physical testing</b>	flooring radiant panel – (class 1) pill test – (passes) smoke density – (less than 450 flaming) static generation – (less than 3.5 kv) ADA compliance – (compliant for accessible routes)	flooring radiant panel – (class 1) pill test – (passes) smoke density – (less than 450 flaming) static generation – (less than 3.5 kv) ADA compliance – (compliant for accessible routes)	flooring radiant panel – (class 1) pill test – (passes) smoke density – (less than 450 flaming) static generation – (less than 3.5 kv) ADA compliance – (compliant for accessible routes)
<b>warranties</b>	lifetime fiber performance for wear lifetime fiber performance for static lifetime stain removal lifetime colorfastness to light and atmospheric contaminants lifetime for tuft bind strength (edge ravel, yarn pulls, zippering)	lifetime fiber performance for wear lifetime fiber performance for static lifetime stain removal lifetime colorfastness to light and atmospheric contaminants lifetime for tuft bind strength (edge ravel, yarn pulls, zippering)	lifetime fiber performance for wear lifetime fiber performance for static lifetime stain removal lifetime colorfastness to light and atmospheric contaminants lifetime for tuft bind strength (edge ravel, yarn pulls, zippering)

<b>style</b>	impulse III 2433 broadloom	structure 2010 broadloom	tone 2024 broadloom
<b>construction</b>	patterned loop	textured loop	textured patterned loop
<b>fiber type</b>	100% Encore® BCF nylon with ColorLoc® Plus	100% Encore® SD Ultima nylon	100% Encore® SD Ultima nylon
<b>dye method</b>	solution / yarn dyed	solution dyed	solution dyed
<b>ounce weight</b>	20oz/sy (678 grams/m <sup>2</sup> )	20 oz/sy (712 grams/m <sup>2</sup> )	16 oz/sy (543 grams/m <sup>2</sup> )
<b>gauge</b>	1/10 (3.94 rows/cm)	1/10 (3.94 rows/cm)	1/12 (4.72 rows/cm)
<b>backing</b>	PremierBac® Plus	PremierBac® Plus	PremierBac® Plus
<b>size</b>	12 feet	12 feet	12 feet
<b>pattern repeat</b>	n/a	¼" W x ¼" L Approximate (.635cm W x .635 cm L)	36" W x 21.625" L Approximate (91.44 cm x 54.92 cm)
<b>total thickness (nominal average)</b>	.25 inches (0.635 cm)	.28 inches (0.71 cm)	.28 inches (0.71 cm)
<b>special technology</b>	ProTex® fluorochemical	ProTex® fluorochemical	ProTex® fluorochemical
<b>optional special technologies</b>	ProSept® antimicrobial Sentir® advanced odor blocking treatment	ProSept® antimicrobial Sentir® advanced odor blocking treatment	ProSept® antimicrobial Sentir® advanced odor blocking treatment
<b>physical testing</b>	flooring radiant panel – (class 1) pill test – (passes) smoke density – (less than 450 flaming) static generation – (less than 3.5 kv) ADA compliance – (compliant for accessible routes)	flooring radiant panel – (class 1) pill test – (passes) smoke density – (less than 450 flaming) static generation – (less than 3.5 kv) ADA compliance – (compliant for accessible routes)	flooring radiant panel – (class 1) pill test – (passes) smoke density – (less than 450 flaming) static generation – (less than 3.5 kv) ADA compliance – (compliant for accessible routes)
<b>warranties</b>	lifetime fiber performance for wear lifetime fiber performance for static lifetime stain removal lifetime colorfastness to light and atmospheric contaminants lifetime for tuft bind strength (edge ravel, yarn pulls, zippering)	lifetime fiber performance for wear lifetime fiber performance for static lifetime stain removal lifetime colorfastness to light and atmospheric contaminants lifetime for tuft bind strength (edge ravel, yarn pulls, zippering)	lifetime fiber performance for wear lifetime fiber performance for static lifetime stain removal lifetime colorfastness to light and atmospheric contaminants lifetime for tuft bind strength (edge ravel, yarn pulls, zippering)



©2016 J&J Industries - This unique design is protected under the U.S. Copyright Act of 1976. Any unauthorized copying or duplication of this design constitutes copyright infringement in violation of federal law.



[jjflooringgroup.com](http://jjflooringgroup.com)

P.O. Box 1287  
Dalton, GA 30722  
p 800 241 4586  
f 706 275 4433

INVISION **kinetex**

---